

Camp Ondessonk St. Noel Center Information

Welcome to Camp Ondessonk and the St. Noel Conference Center. Below is some information about the conference center that will make your stay more enjoyable.

WIFI is free and available at St Noel using the network Noel Guest 2016. Request the password from the office staff, or you can find it posted on the office door.

St. Noel guests are asked to provide their own linens with the exception of the queen size bed made up in each room. Additional linens (sheets, pillows, towels) are available for a small fee. In the basement library, there is a black cabinet which has extra toilet paper, soap and trash bags, as well as some spare blankets and towels. These are for all guests to use if necessary during their stay and are not a substitute for not bringing your own linens.

Check-out time on the last day of your stay is 10:00 am. You do not need to depart camp at 10:00 am, but please move your belongings out of the room at that time so that we can begin preparing for guests arriving later that day. You may place your keys in the key drop on the deck when you depart.

Ice and Coffee are available in the basement common area. Feel free to use the common area for reading, relaxing or socializing as long as it has not been reserved by another group. The kitchen in the basement is not stocked with cookware and should not be used without permission with the exception of the refrigerator in the back of the kitchen, which may be used for storage.

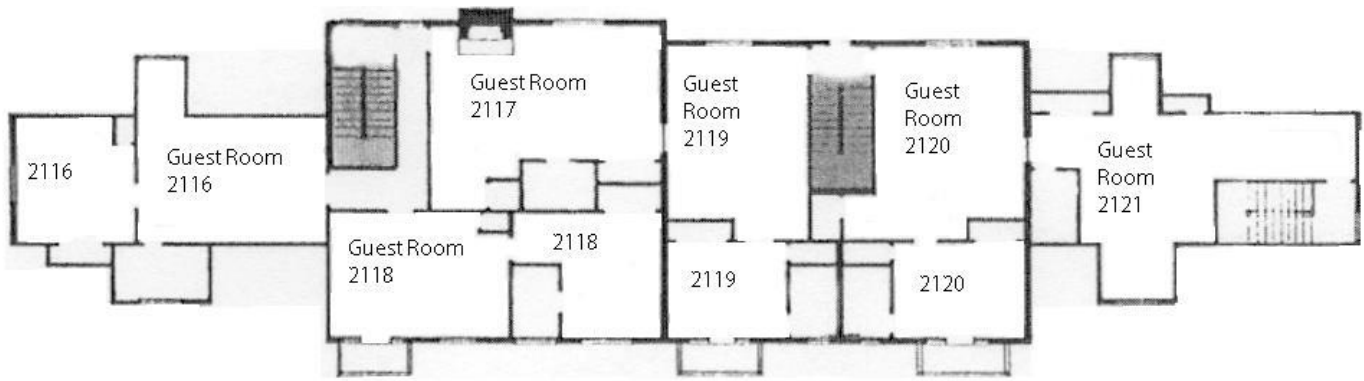
Hot water and coffee are also available in the basement. The coffee maker will begin brewing as soon as water is added, so please use a spare coffee pot to fill the reservoir, leaving one pot on the heater to catch the hot coffee.

There are vending machines for snacks and drinks in the basement in the far stairwell adjacent to the library and in the library itself.

There is a list of local restaurants posted at the front door. Meals and programs are only available at camp if prior arrangements have been made. Please do not enter program areas that are closed or do not have a staff member present. This includes: the swimming area, the stables and the boating area.

Mass is offered at camp on Saturday nights during some specialty weekends. A local mass schedule is available if you would like to attend mass during your stay. The chapel is always open for quiet prayer and meditation.

Office hours are Monday through Friday, 8:00 am - 4:30 pm. There will always be someone in the office during those hours. On open camping weekends, the Trading Post is staffed on Friday nights and Saturday and Sunday mornings from 9:00 am -12:00 pm. During your stay, if you need assistance and there is no one in the office nor in the Trading Post, you can reach an on-duty staff member by calling 618-759-1780. In an emergency always call 911 first.



SECOND FLOOR

