

How to Make a Lodge Sash

Be sure to read through all of the directions before you begin to make sure that you have all the supplies.

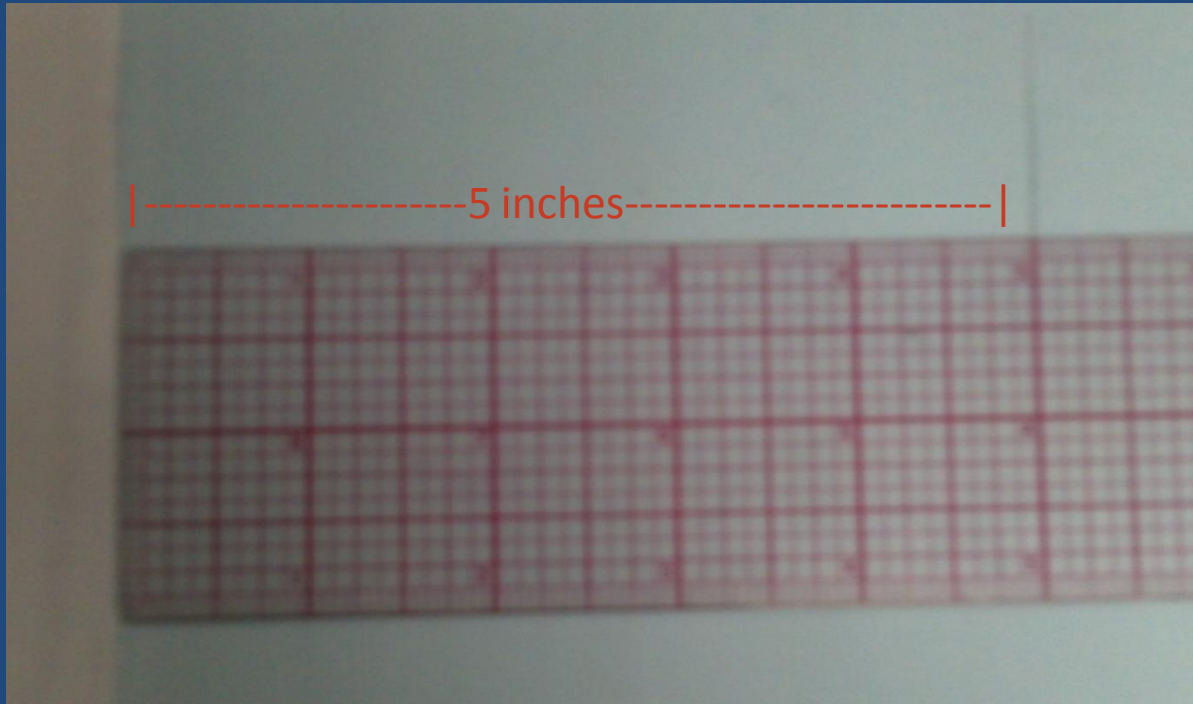
At the Fabric Store

- To begin you'll need fabric and thread.
- It is best to match the fabric to your own Lodge sash. Usually the best choice of fabric can be found in the 'lining' section. Cotton, polyester, or a blend is a good fabric choice. Be sure to look at the label for washing instructions.
- One sash should be at least $2 \frac{1}{3}$ yards in length, so you can ask the fabric store worker to cut the fabric to that length. You can also make sashes that are longer for taller people.
- Pick matching thread that is also made of cotton or polyester. To get the best match, unwind a few inches and lay it across your fabric. If it blends in well it is a good choice.

To Begin

- Before doing anything else, wash and dry your fabric according to the given instructions.
- Next, iron all the wrinkles out of the fabric. Be sure to adjust your iron to the appropriate temperature.
- If there are any loose threads on the edges you can cut them off.

Cutting the Sashes

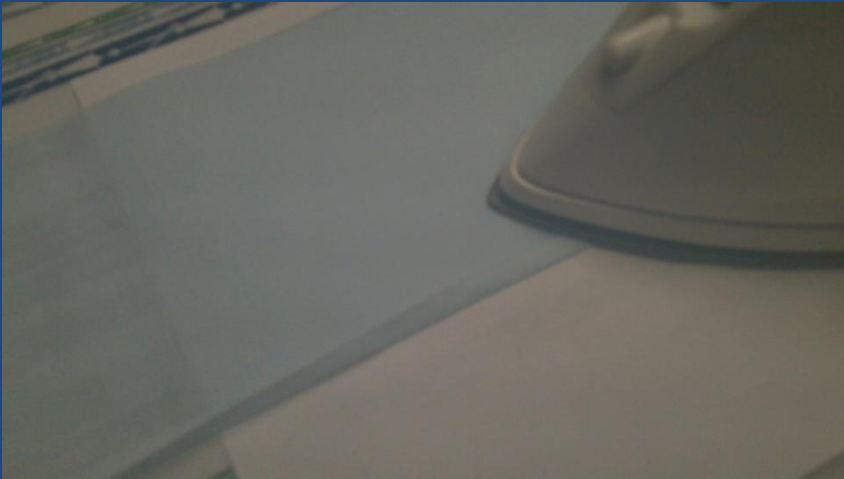


Mark your fabric into 5 inch wide strips with a pencil then cut.

Finishing the Edges



Fold the fabric edge over $\frac{1}{4}$ inches and press.



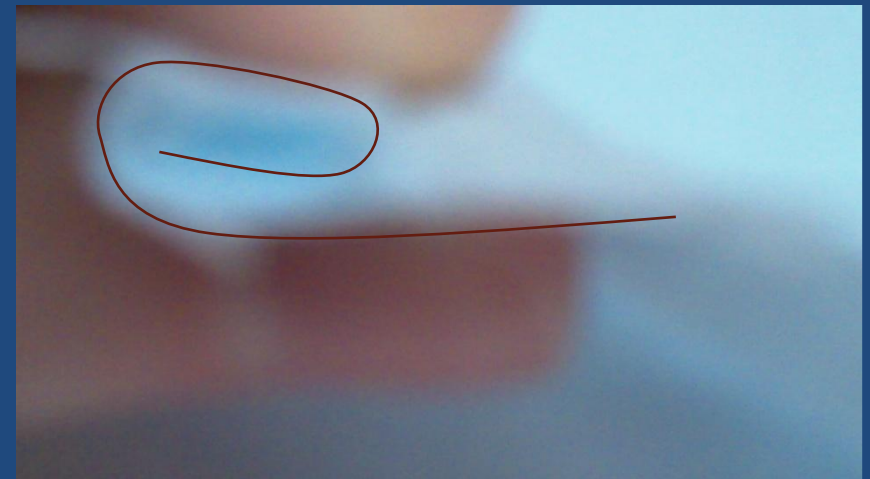
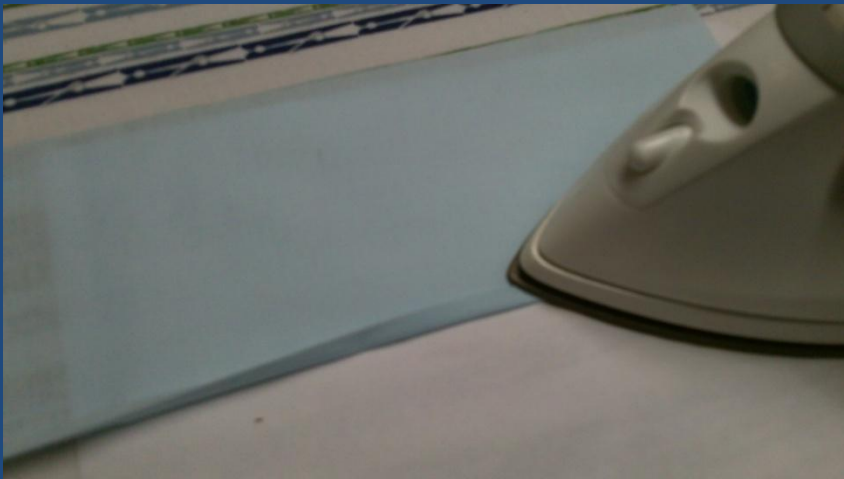
Side view

Finishing the Edges Cont.

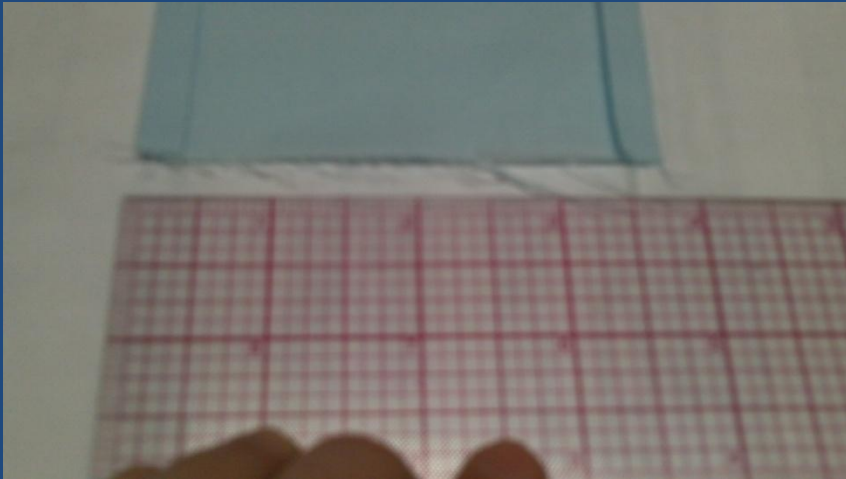


Fold the edge over $\frac{1}{4}$ inches again and press. There should now be no raw edge exposed.

side view

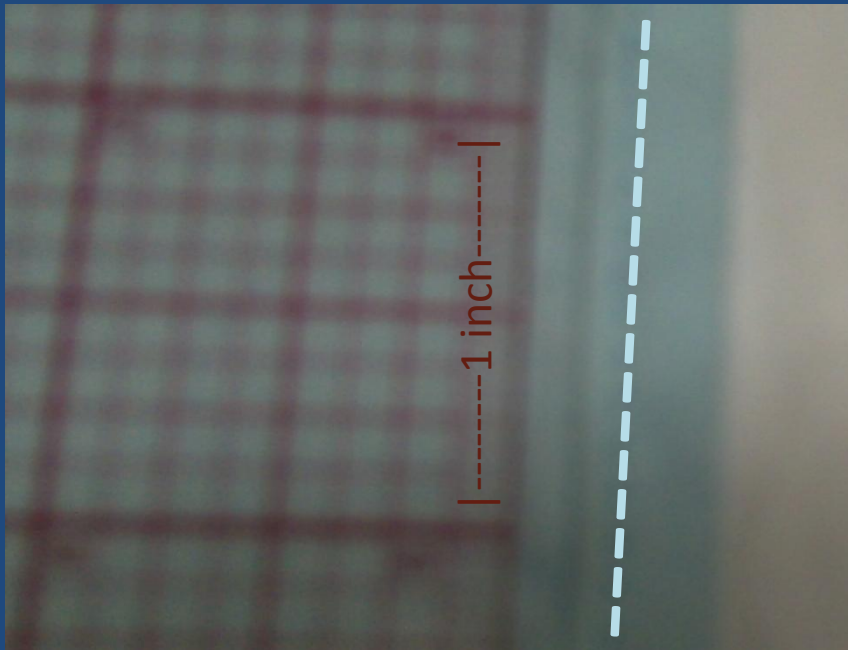


Progress Check



- Complete these steps on each of the long sides. Your sash should now be approximately 4 inches wide.

Time to Sew



- Be sure to read your sewing machine manual since every sewing machine is a little different.
- It is always smart to use a scrap piece of fabric to test that your machine is set up properly.
- Use a medium to small stitch length, about 10 stitches per inch.

Sewing



- When you begin sewing, line up your needle very close to the folded edge.
- To 'knot' your thread, make 3 stitches forward then 3 stitches backwards.
- Continue a straight line all the way to the end of the sash and knot the thread again by backstitching 3 stitches and stitching forward 3 stitches.
- Tip: hold the fabric in front and behind the needle to help guide the fabric.

Progress Check

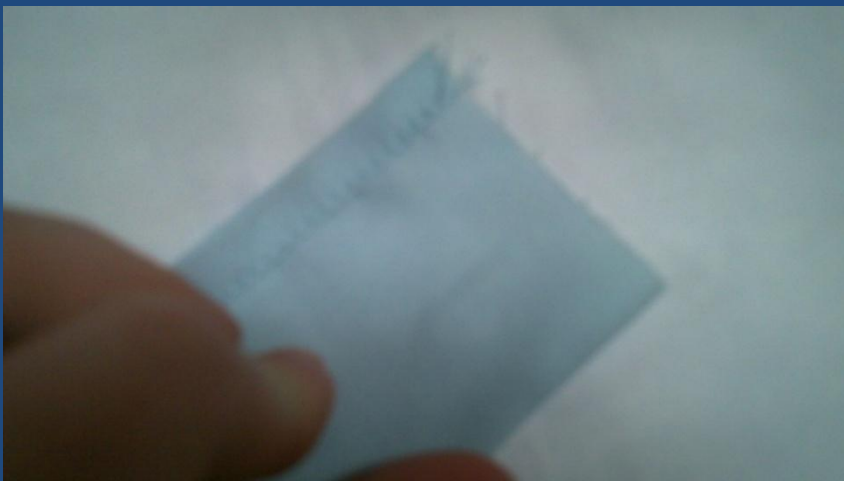


- Your sash should still be approximately 4 inches wide. Both long sides should have a hem on them so that there are no raw edges showing.

Finishing the ends

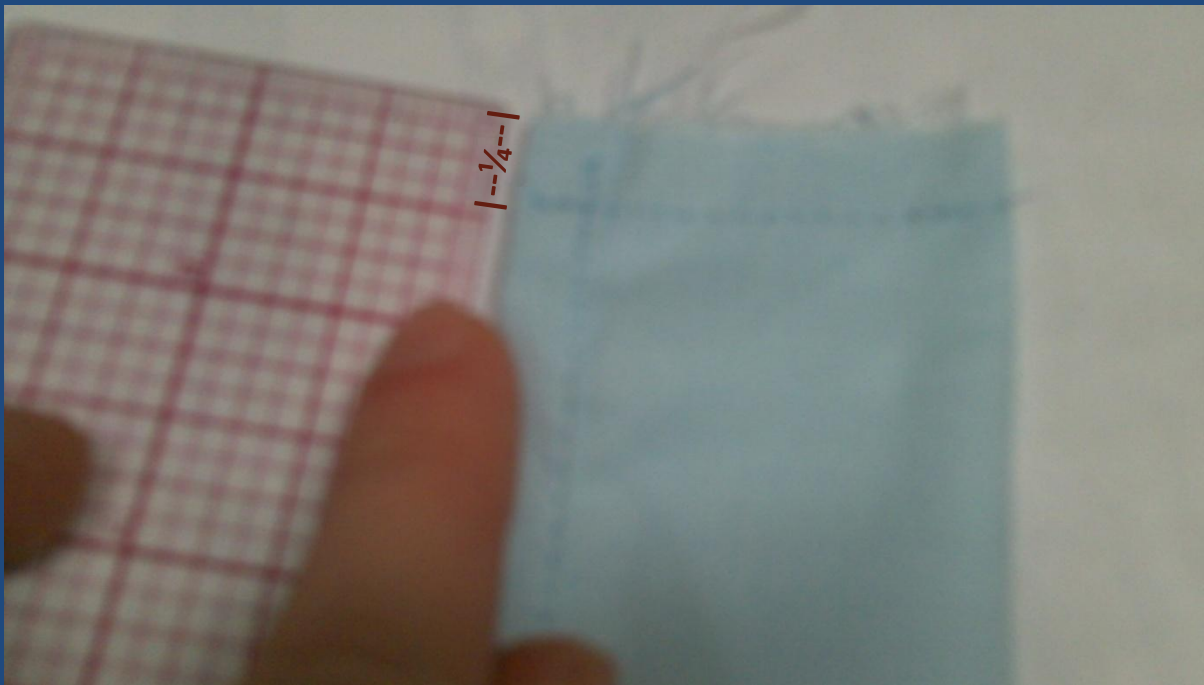


- Fold the ends together with the hem on the outside.
- You can either pin the two plies together or just hold them together.



Sewing the Ends

- Sew a straight line $\frac{1}{4}$ inches from the edge of the fabric.



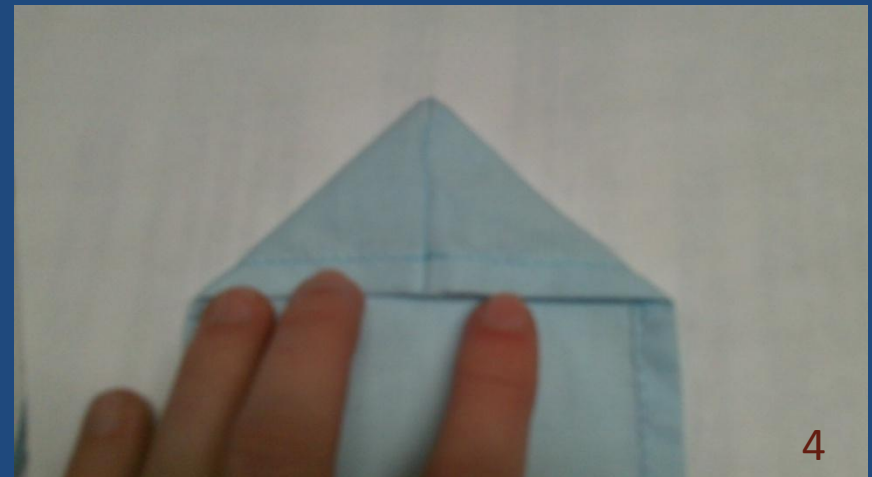
Trimming



Cut the corner off of each end so that there is space to flip the end inside out.



Flip the ends

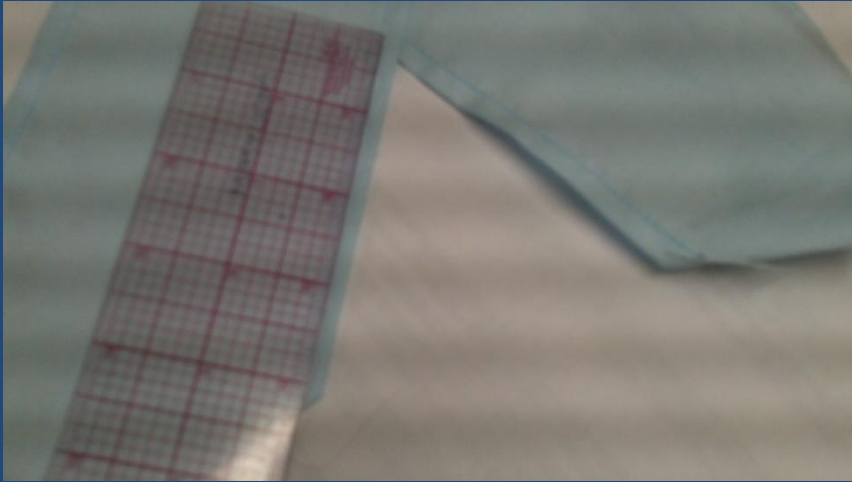


Finish the ends



Press the ends flat.

Sew the Sides Together



- To finish your sash, find a good angle by looking at your own sash.
- Pin the fabric in place.
- Be sure that there is at least 4 inches hanging off of the end. There could be more though.
- Remember that sashes are worn over the left shoulder, so check to make sure that it hangs properly before sewing.

Finishing Touches



- Sew a diamond shape following the thread that is on the hem.
- Remember to backstitch at the beginning and end to ensure that your thread will not fall out.

All Finished!

- Mail in your sashes to Camp Ondessonk so that they can be given out to new Lodge members this summer!
- Emblems will be sewn on by someone at Camp Ondessonk.
- If you are using these for part of your Lodge Arrowhead be sure to include your name on a note inside the package.
- You can mail in finished sashes to:

Attn: Lodge Officials
3760 Ondessonk Road
Ozark, IL
62972