

Camp Ondessonk

ROADMAP TO 2022 SUMMER CAMP



Camp Ondessonk's Roadmap to 2022 Summer Camp

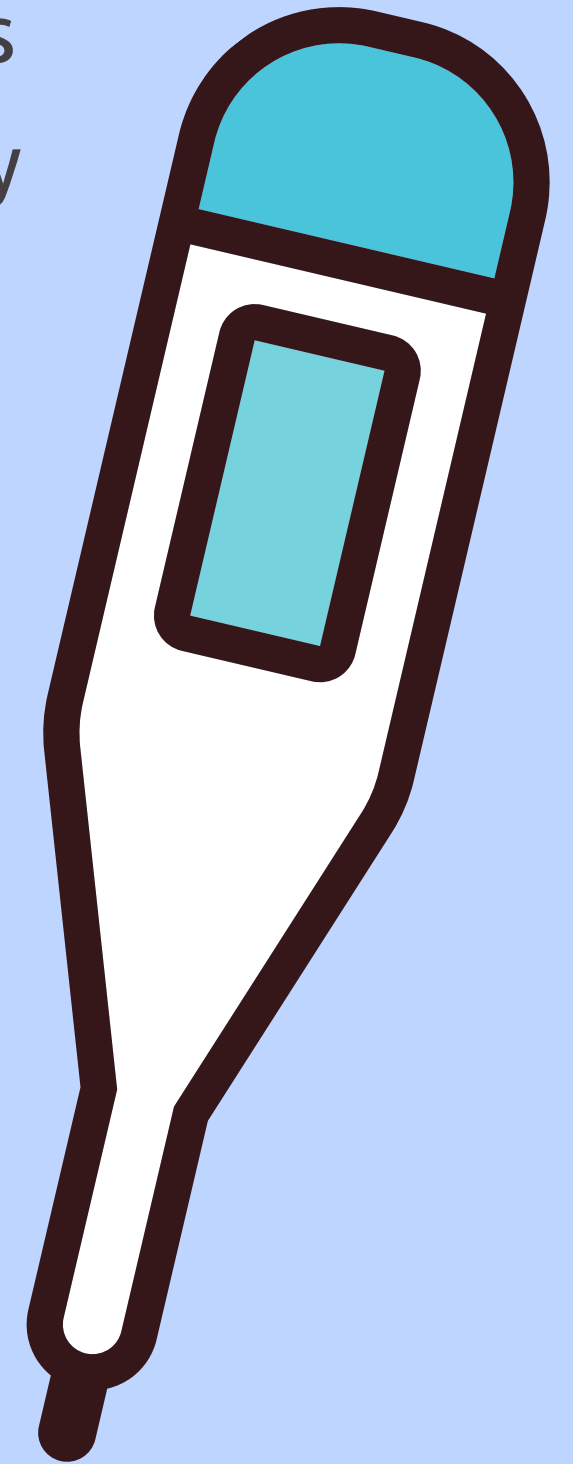
Our leadership team periodically assesses and alters Camp's COVID operations plan as conditions change. As you know, COVID infections continue to impact our country, region, and even our local area. We have successfully provided our camp guests with highly valued outdoor education programs, family camping, and outdoor events in recent months. We've found that children and adults alike are presently quite drawn to outdoor experiences. Our efforts in 2021 to responsibly provide quality services in the midst of a pandemic required us to successfully create and follow virus transmission mitigations protocols for every operation area. That practical knowledge will be incorporated into our 2022 operations. Some mitigations, like arrival day Covid testing, will remain the same. Some mitigations may be less restrictive. Of course, we will carefully follow operating guidelines created by CDC, best practices as advised by the ACA, and, when published, additional guidance issued by IDPH and IDCEO. We can't wait for the day we greet your arriving camper on the covered bridge. Further, we look forward to the opportunity to execute the plans we are working so hard to create.



Prescreening Instructions 14 days before arrival

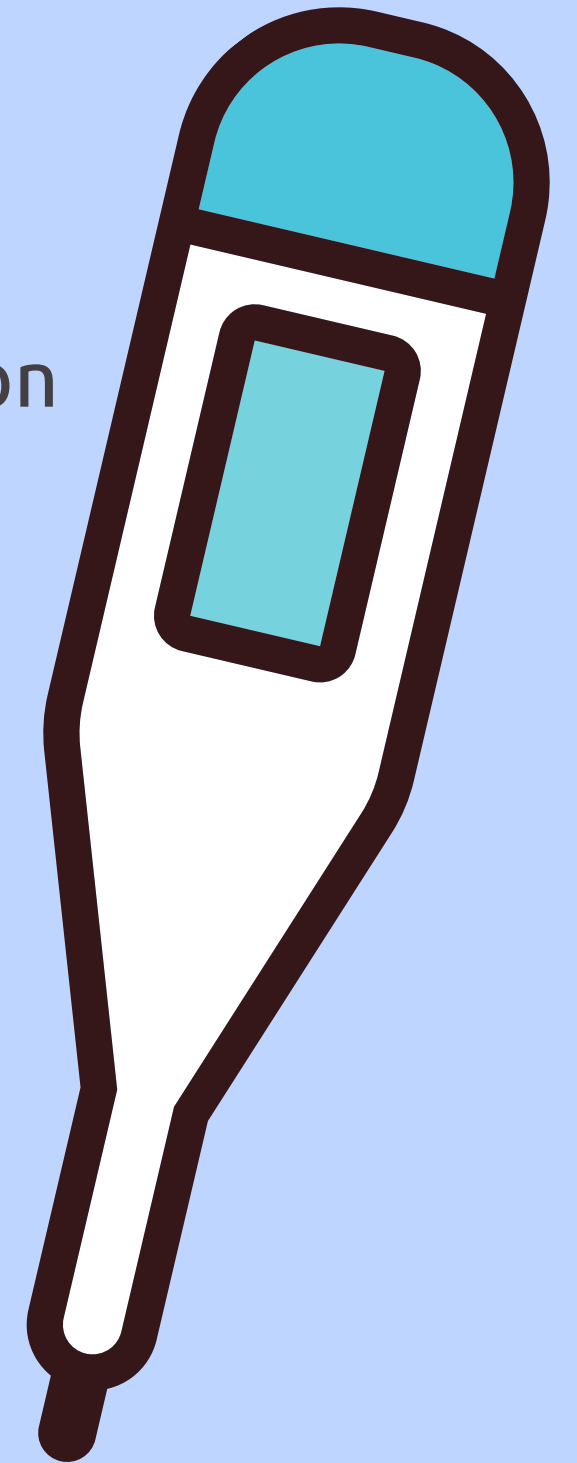
Before arriving at Camp Ondessonk, we are requesting prescreening of campers (with the assistance of parents/guardians), volunteers, and staff members. They should self-monitor for 14 days and conduct prescreening activities such as:

- ★ Taking and recording their temperature for 14 days before Camp.
- ★ Self-screening for the presence of symptoms (fever of 100.4 °F or higher, cough, shortness of breath, diarrhea, fatigue, new or unusual headache, muscle aches, nausea, loss of taste or smell, sore throat, vomiting, etc.) within the past two weeks.
- ★ Determining if the individual has traveled internationally within the past two weeks.
- ★ Determining if the individual has been in close contact with a person who has been diagnosed with, tested for, or quarantined because of COVID-19.

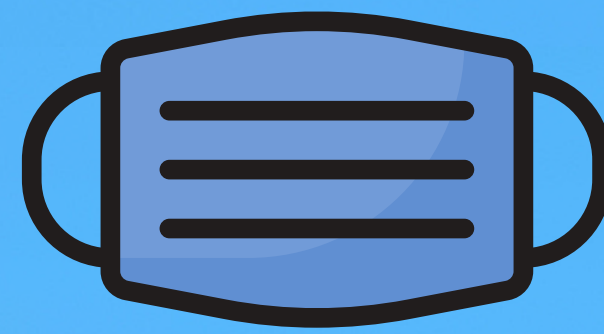


Prescreening Instructions 14 days before arrival

- ★ If a camper, volunteer, or staff member answers yes to any of the COVID-19 symptoms or exposure factors in the prescreening process, please consult with your health care provider for guidance, then contact Camp Ondessonk registration staff at 877-659-2267 x131 or registration@ondessonk.com.
- ★ If a camper is unable to attend Camp due to a COVID-related issue, or if Camp cancels your session, you will receive a 100% refund, including deposit.



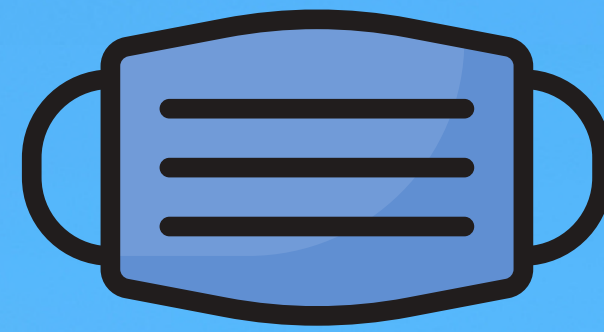
Camper Check-in



- Two weeks prior to the session of Camp, Camper families will receive an email that includes a link and instructions to sign up for an arrival time on Camper Check-in day.
- Camper families unable to arrive during the assigned times are asked to contact 877-659-2267 x131 or registration@ondessonk.com. Day of check-in, please call 877-659-2267 x0 or 618-759-1780 for further instructions.
- Camper families will receive medical prescreening via email to be completed before arriving at Camp.
- Camper Check-in procedures will be modified as the CDC, IDCEO, and IDPH provide new guidance.



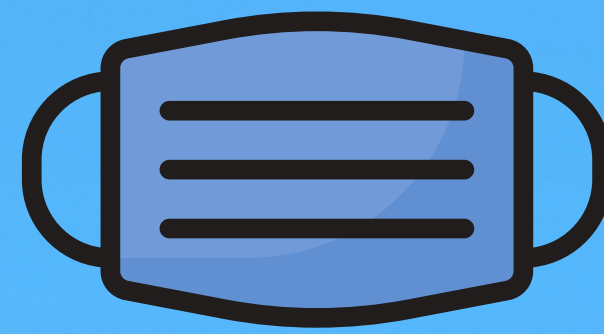
Camper Check-in



- Travel to Camp: It is preferred that campers travel to Camp by personal vehicle. If a camper is planning to fly to Camp, they must wear a face covering and maintain physical distancing at all times during travel.
- Most of the check-in stations will be drive-through.
- Mask wearing requirements will be based on COVID-19 Community Levels published by CDC. COVID-19 Community Levels are a new tool to help communities decide what prevention steps to take based on the latest data. Levels can be low, medium, or high and are determined by looking at hospital beds being used, hospital admissions, and the total number of new COVID-19 cases in an area.



Camper Check-in



- While at Camp Ondessonk, we request parents/guardians to restrict the amount of time to 1.5 hours while onsite.
- Who Should Not Come? We understand this might not be the right summer for your child to attend Camp. If a camper or staff member is at higher risk for COVID-19 complications, we highly recommend they consult their medical provider to assess the risk of attending Camp.
- Families who cannot pick up their child within 24 hours should not participate in Camp this summer. Families who are not comfortable with the increased risk of contracting COVID-19 should not attend Camp this summer.



Campers, Staff, and Activities



- ★ A cohort is a group of campers and staff that spend the session together. Cohorts will be used. Masks will be optional depending on the COVID-19 Community Levels. As long as levels remain low masks will remain optional when campers and staff in a cohort are in close proximity to non-cohort members.
- ★ Summer Camp activities will return to normal operation. If COVID-19 Community Levels rise, Summer Camp activities have been designed and, in some cases, completely re-imagined with a goal of smaller group interaction.
- ★ Activity areas and equipment will be sanitized prior to each group's arrival

Campers, Staff, and Activities



- ★ All hot meals will be served out of the dining hall at one set time. If COVID-19 Community Levels rise, the kitchen staff will stagger dining hall service times and/or provide delivery service to each unit.
- ★ All outdoor equipment and facilities will be routinely cleaned. All shared equipment (e.g., bows and arrows) will be cleaned immediately after each use or session. Cleaning and disinfection at the end of each day will be conducted on all equipment.
- ★ Ondessonk staff will instruct campers to use the swimming buddy system for a scheduled free swim where each camper is assigned a "buddy" to stay with at all times. Staff will ensure that assigned buddies are in the same cohort.
- ★ Campers and staff participating in equestrian activities will follow acceptable hand hygiene practices. Tack, i.e. saddles and reins, will be appropriately cleaned between riders using mild soap and water. Helmets will be cleaned and disinfected using the appropriate cleaning products for nonporous and porous surfaces.

Transportation



Bus transportation to and from Camp will be limited to 75% capacity* including the driver and one staff member. *This percentage will be evaluated based on family registrations and other factors as we near the summer sessions. Masking will be required on bus transportation. Camp Ondessonk will provide KN95 masks, which give an added layer of protection in comparison to cloth masks without constricting breathing significantly.

Face Coverings



CAMPERS, STAFF, AND VOLUNTEERS

- Will be required to have a face-covering with them at all times.
- When requested, will wear face coverings properly over your nose and mouth.
- When requested, will wear face coverings in all indoor locations except for eating, sleeping, showering, and brushing teeth. Ondessonk staff will help ensure at least six feet of physical distance is maintained between individuals during the limited times when face covering is not in use.
- When requested, will wear face coverings when around people outside of their cohort group.
- When requested, will wear face coverings outdoors when physical distancing is not possible.
- Will wear face coverings while in the Health Center unless instructed otherwise by the medical staff.
- Will not share face coverings with anyone else unless in a case of need; it must be unused and unsoiled.
- Should bring a minimum of ten masks so that one or two can be worn each day.
- Should mark their initials inside the face coverings for identification purposes.

Mask wearing requirements will be based on COVID-19 Community Levels. COVID-19 Community Levels are a new tool to help communities decide what prevention steps to take based on the latest data. Levels can be low, medium, or high and are determined by looking at hospital beds being used, hospital admissions, and the total number of new COVID-19 cases in an area.

Hand Hygiene



Camp Ondessonk staff have installed additional handwashing and disinfectant stations throughout Camp's property. Camp Ondessonk staff and campers will wash or disinfect their hands:

- Before eating food
- Upon entering your cabin
- After being in contact with someone who may have been sick
- After touching frequently touched surfaces
- After using the restroom
- After using common items, such as program equipment and handicraft supplies

Vaccine Information



Camp Ondessonk executive staff will monitor updates from Pfizer, Moderna, and the University of Oxford-AstraZeneca vaccines already in use. We have requested all staff and volunteers to be vaccinated except for medical or religious exemptions. This protocol will further limit a session's possibility of community spread of the virus. At this time, campers who are eligible are encouraged but not required to receive a COVID-19 vaccine.

Daily Health Checks



Camp Ondessonk staff will conduct daily health screenings for campers, volunteers, and staff. These will be similar to those you will perform at home before campers arrive. This procedure will consist of temperature checks and questions; any campers noting the following will be taken to the Health Center: cough, shortness of breath, chills, muscle pain, new or unusual headache, sore throat, loss of taste or smell, diarrhea, feeling feverish, or a measured temperature equal to or greater than 100.4 degrees Fahrenheit.

Daily Health Checks



Health staff will use the PPE while working with individuals who have a suspected case of COVID-19. If a camper, staff, or volunteer is suspected of having COVID-19 based on this assessment, Camp Ondessonk staff will isolate that individual.

According to guidance from our local health officials, Camp Ondessonk executive staff will notify parents/guardians and appropriate healthcare providers.

Response Management of a Case or Probable Case



Suppose someone does fall ill at Camp in 2022. In that case, we will execute our multi-staged quarantine and isolation procedure that will allow us the time to determine the best response, including whether or not the ill camper will be able to rejoin the camp population. If a Camper tests positive or is suspected of having COVID-19, we will call their parents and ask that they be picked up within 24 hours. A prorated refund for the remaining days of the session will be given.

Parent Communications



Camp Ondessonk strives to communicate with parents in a transparent, thoughtful, and thorough way. Knowing the importance of communication this summer, we are committed to open dialogue and communication with families every step of the way.

- Parents/Guardians will be kept well informed throughout each session about COVID testing, isolation and quarantine measures if required, as well as weekly parent emails, camper photos, and videos.
- If a camper or staff tests positive for COVID while in our care, we will notify all parents with campers on site via email and text messaging. Ondessonk executive staff will identify the specific measures we are taking to address the situation.

Work in Progress



Please understand this is a working document. All of these considerations are subject to change. Camp Ondessonk's Roadmap to 2022 Summer Camp is not our final operations manual for 2022, but a planning outline based on what we know now from science and best practices today. We will continue to inform you of our latest plans through emails and our website <https://ondessonk.com/covid-19-updates/> as plans evolve. During complicated times, our goals are simple. We are eager to provide meaningful, nourishing, and fun summer camp experiences. In doing so, we will take every reasonable step to minimize the possibility of virus transmission within the summer camp community.