

# How to Make a Lodge Sash

Be sure to read through all of the directions before you begin to make sure that you have all the supplies.

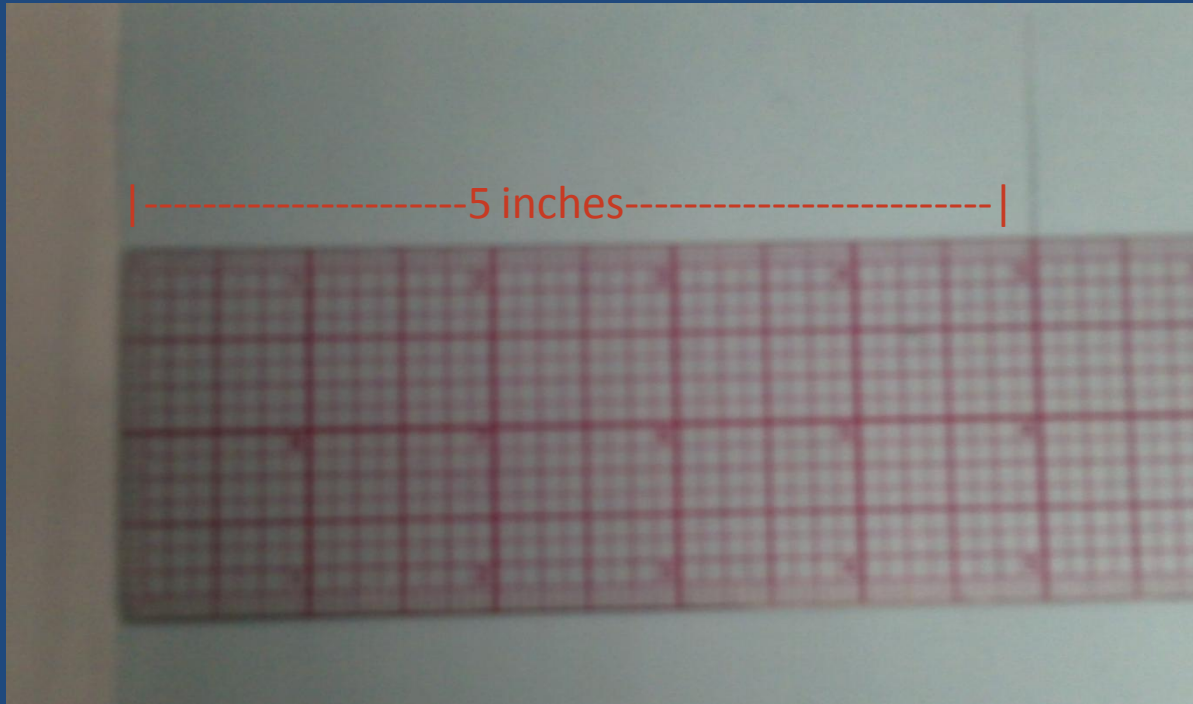
# At the Fabric Store

- To begin you'll need fabric and thread.
- It is best to match the fabric to your own Lodge sash. Usually the best choice of fabric can be found in the 'lining' section. Cotton, polyester, or a blend is a good fabric choice. Be sure to look at the label for washing instructions.
- One sash should be at least  $2 \frac{1}{3}$  yards in length, so you can ask the fabric store worker to cut the fabric to that length. You can also make sashes that are longer for taller people.
- Pick matching thread that is also made of cotton or polyester. To get the best match, unwind a few inches and lay it across your fabric. If it blends in well it is a good choice.

# To Begin

- Before doing anything else, wash and dry your fabric according to the given instructions.
- Next, iron all the wrinkles out of the fabric. Be sure to adjust your iron to the appropriate temperature.
- If there are any loose threads on the edges you can cut them off.

# Cutting the Sashes

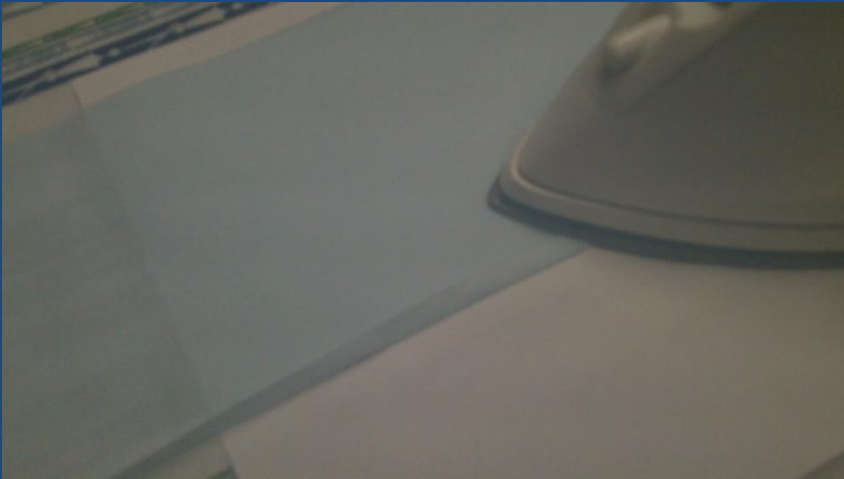


Mark your fabric into 5 inch wide strips with a pencil then cut.

# Finishing the Edges



Fold the fabric edge over  $\frac{1}{4}$  inches and press.



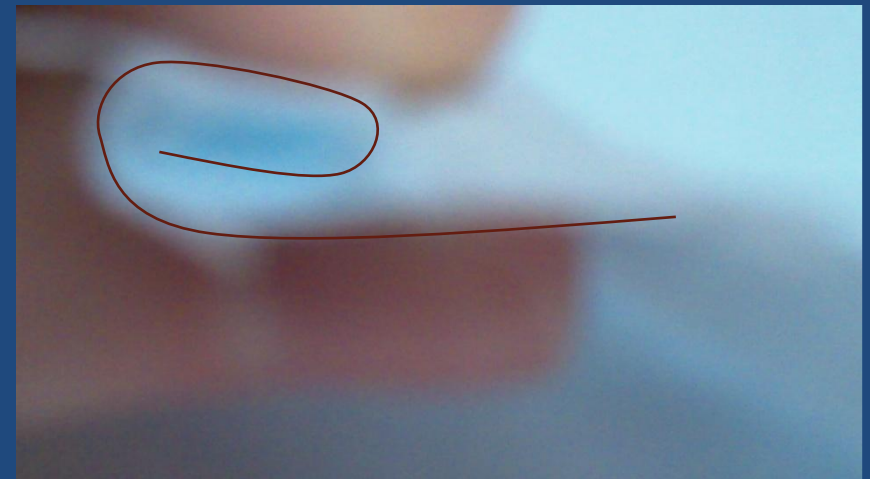
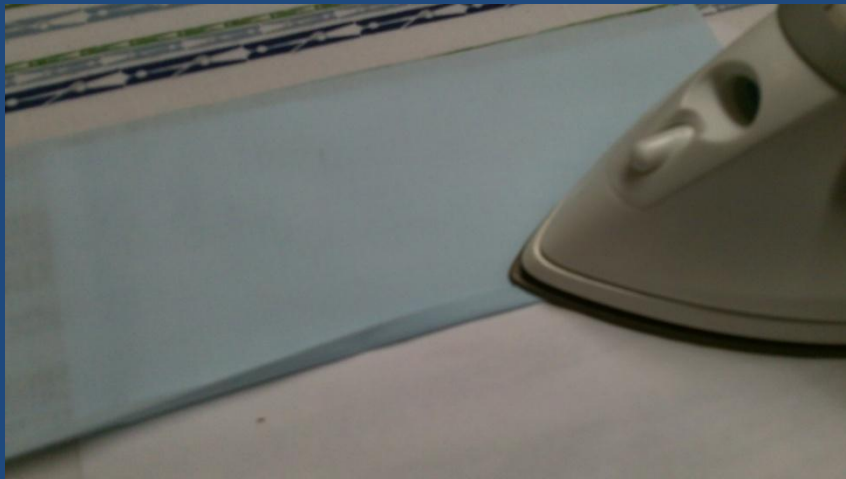
Side view

# Finishing the Edges Cont.

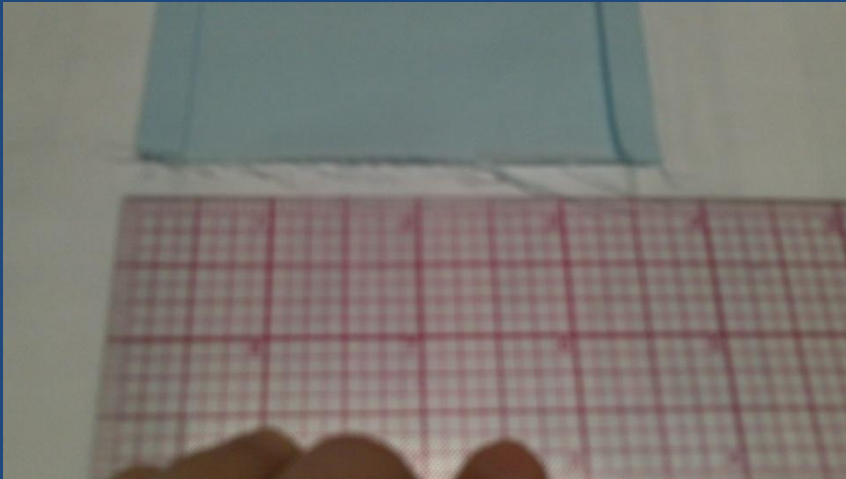


Fold the edge over  $\frac{1}{4}$  inches again and press. There should now be no raw edge exposed.

side view

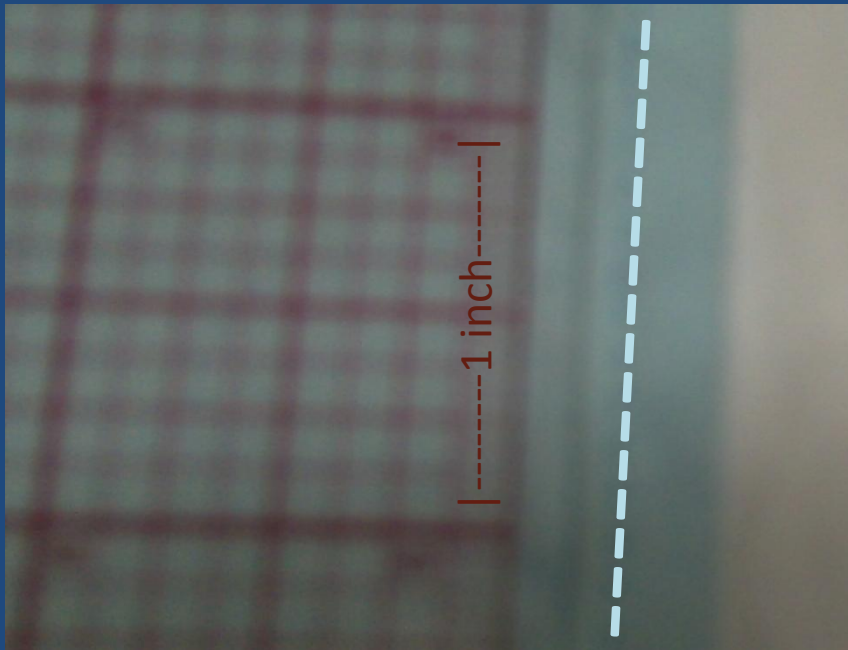


# Progress Check



- Complete these steps on each of the long sides. Your sash should now be approximately 4 inches wide.

# Time to Sew



- Be sure to read your sewing machine manual since every sewing machine is a little different.
- It is always smart to use a scrap piece of fabric to test that your machine is set up properly.
- Use a medium to small stitch length, about 10 stitches per inch.

# Sewing



- When you begin sewing, line up your needle very close to the folded edge.
- To 'knot' your thread, make 3 stitches forward then 3 stitches backwards.
- Continue a straight line all the way to the end of the sash and knot the thread again by backstitching 3 stitches and stitching forward 3 stitches.
- Tip: hold the fabric in front and behind the needle to help guide the fabric.

# Progress Check

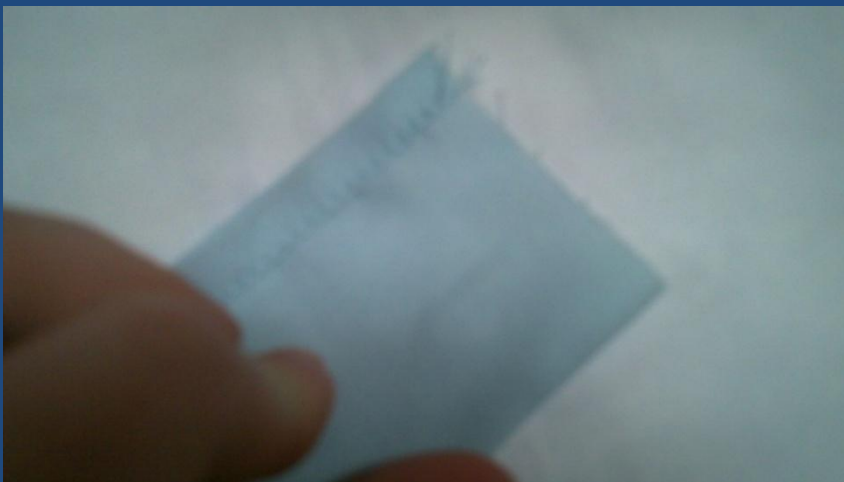


- Your sash should still be approximately 4 inches wide. Both long sides should have a hem on them so that there are no raw edges showing.

# Finishing the ends

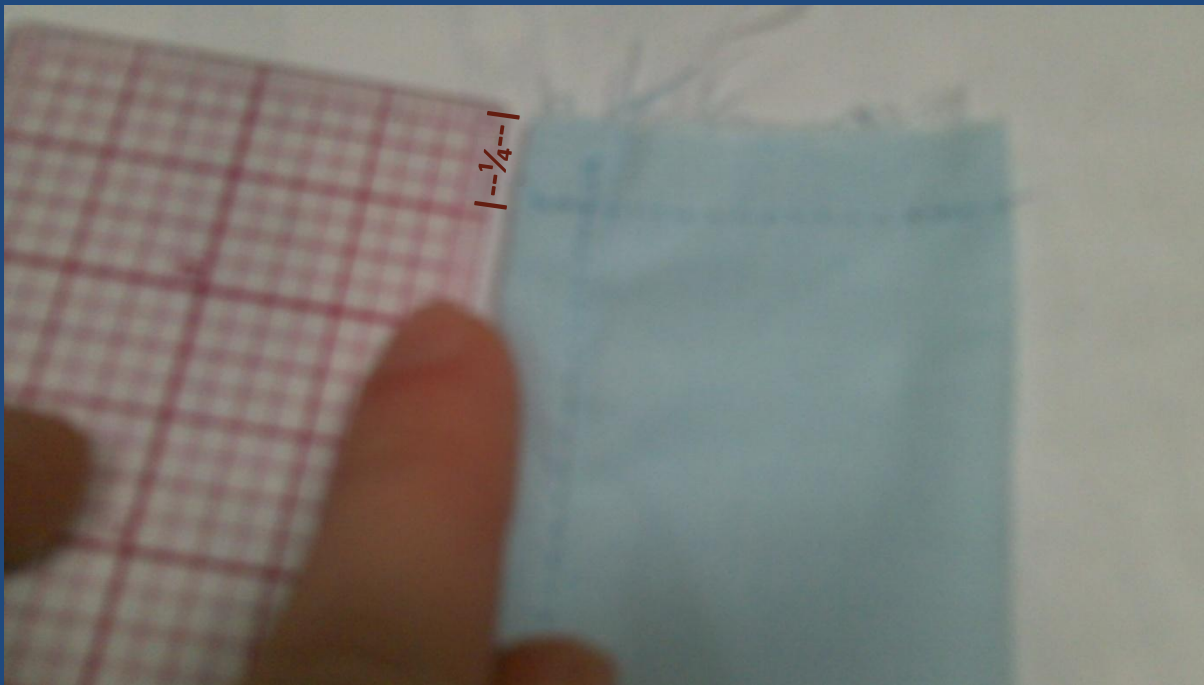


- Fold the ends together with the hem on the outside.
- You can either pin the two plies together or just hold them together.



# Sewing the Ends

- Sew a straight line  $\frac{1}{4}$  inches from the edge of the fabric.



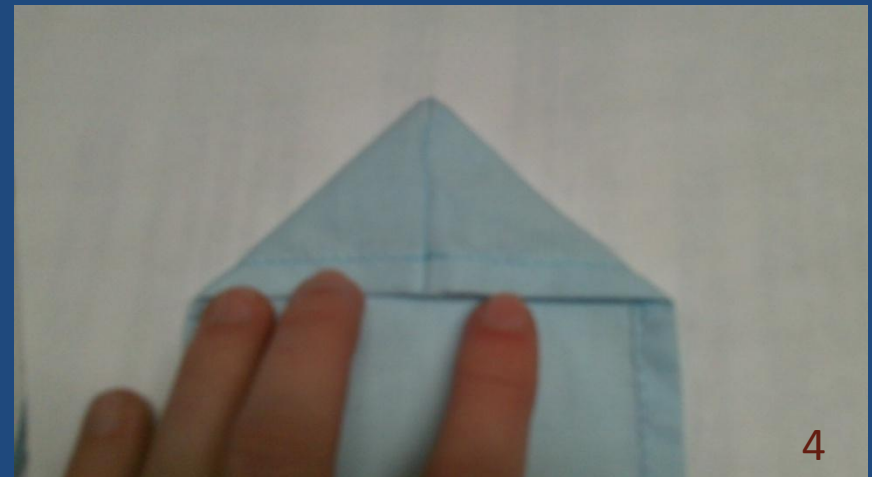
# Trimming



Cut the corner off of each end so that there is space to flip the end inside out.



# Flip the ends

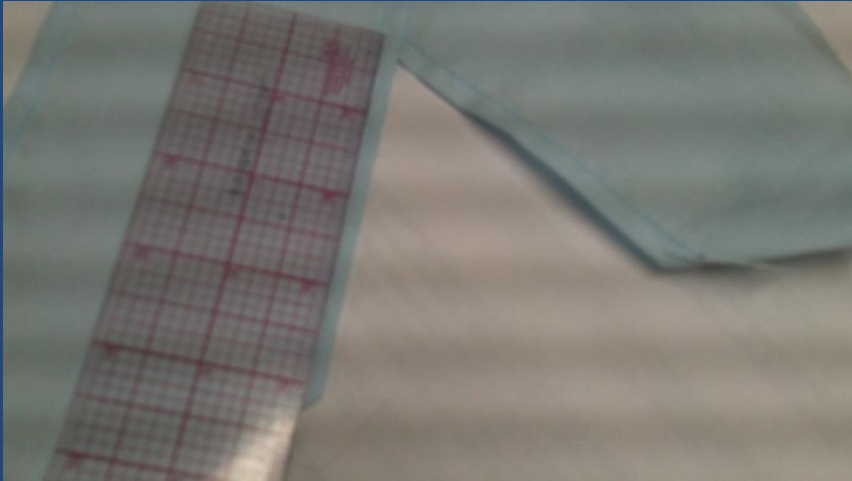


# Finish the ends



Press the ends flat.

# Sew the Sides Together



- To finish your sash, find a good angle by looking at your own sash.
- Pin the fabric in place.
- Be sure that there is at least 4 inches hanging off of the end. There could be more though.
- Remember that sashes are worn over the left shoulder, so check to make sure that it hangs properly before sewing.

# Finishing Touches



- Sew a diamond shape following the thread that is on the hem.
- Remember to backstitch at the beginning and end to ensure that your thread will not fall out.

# All Finished!

- Mail in your sashes to Camp Ondessonk so that they can be given out to new Lodge members this summer!
- Emblems will be sewn on by someone at Camp Ondessonk.
- If you are using these for part of your Lodge Arrowhead be sure to include your name on a note inside the package.
- You can mail in finished sashes to:

Attn: Lodge Officials  
3760 Ondessonk Road  
Ozark, IL  
62972